



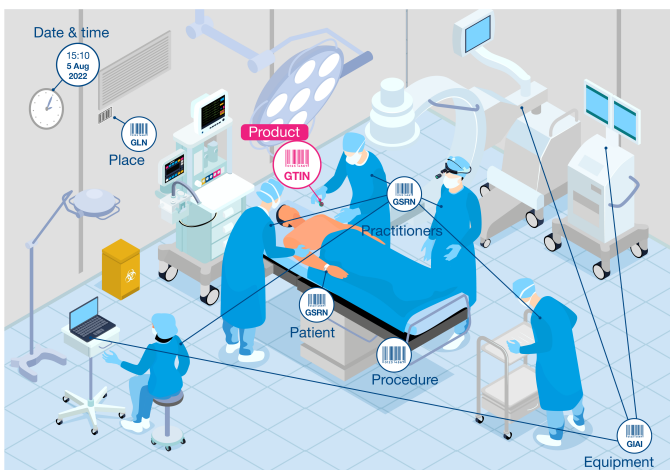
# GS1 standards adoption: A ten step guide for NHS suppliers

## Uniting for safety

The four nations of the UK have come together to establish a collaboration group for their pioneering programmes to improve patient safety.

The Scan4Safety programmes being implemented across the nations of the UK each have the same fundamental aim of improving patient safety through better traceability of medical devices and equipment using global standards such as GS1.

Scan4Safety enables the capture of standardised data relating to patients, products, places, procedures, staff, and equipment. Data is captured digitally, through point of care scanning by utilising global standards. Simple technology, such as barcode scanning, will be used to capture data underpinned by proven and open global standards that are used widely in healthcare.



England, Wales and Scotland are all running Scan4Safety programmes while Northern Ireland is looking to implement point-of-care scanning via its transformational Encompass programme.

### 1. Become a member of GS1 to obtain your GS1 Company Prefix (GCP)

You will need a GCP so you can form product and location identifiers. This will enable you to generate Global Trade Item Numbers (GTINs) for your products and Global Location Numbers (GLNs) for your company and any significant locations.

To join GS1 or find out if your company is already a member, contact the GS1 UK healthcare team on [healthcare@gs1uk.org](mailto:healthcare@gs1uk.org).

## 2. Learn how to get started with using GS1 standards

GS1 UK's 'Barcoding success series' provides easy to follow step-by-step guidance on how to get started including everything from understanding GS1 standards to generating barcodes for your products.

Watch the full series at: [gs1uk.org/industries/healthcare/barcoding-success-series/on-demand](https://gs1uk.org/industries/healthcare/barcoding-success-series/on-demand).

## 3. Allocate a GS1 location identifier for your company

GLNs are used to identify your company as a supplier to the NHS. This becomes your globally unique supplier code .

## 4. Register your GLN(s) in LocationManager\*

You can also register your GLN(s) in the NHS GLN registry, LocationManager. Your GLN(s) can then be shared with the NHS organisations (in England and Wales) that you trade with.

## 5. Add the relevant NHS GLNs to your company systems\*

Ensure the GLNs for the NHS organisations (in England and Wales) you trade with, are listed in your internal systems so they can be used for purchase to pay (P2P).

## 6. Allocate your GTINs to your products

Either using the GS1 UK Numberbank or your own system, allocate a unique GTIN to each of your products and any predefined packaging configurations, i.e., cartons and cases. Then, share these with your customers for existing product listings and include these in your tender submissions.

## 7. Choose the correct GS1 barcode

The barcode required will depend on the data that you need to capture, the packaging levels and the supply chain. The GS1-128 and or the GS1 DataMatrix will be required to capture the production information such as the expiry date/LOT etc., alongside the GTIN to identify the product.

## 8. Verify your barcodes with GS1 UK

To make sure your barcodes are accurate and scannable, you can get your barcodes verified by GS1 UK before printing them on your packaging. This will check the barcode type, the data structure, the size and the scanning quality to ISO 15416 and 15415.

## 9. Find a Peppol Access Point provider\*

Peppol stands for Pan-European public procurement online. Using Peppol enables eProcurement via the Peppol network to provide standards-based business process interoperability. In order to meet purchase-to-pay requirements, you will need to have a Peppol Access Point provider so you can access the Peppol network to exchange information electronically, i.e., for exchanging purchase orders and invoices.

You will need to sign up, and then integrate with, a Peppol Access Point. [peppol.eu/adoption/access-point-providers](https://peppol.eu/adoption/access-point-providers).

## 10. Implement electronic orders and invoices using the Peppol standard with GS1 identifiers\*

Either using the GS1 UK Numberbank or your own system, allocate a unique GTIN to each of your products and any predefined packaging configurations, i.e., cartons and cases. Then, share these with your customers for existing product listings and include these in your tender submissions.

For any enquiries regarding GS1 standards in healthcare, email GS1 UK at: [healthcare@gs1uk.org](mailto:healthcare@gs1uk.org).

GS1 UK also offer training for members including virtual and on-site sessions. Get in touch at: [training@gs1uk.org](mailto:training@gs1uk.org).

To learn more about using LocationManager visit: [gs1uk.org/locationmanager](https://gs1uk.org/locationmanager).